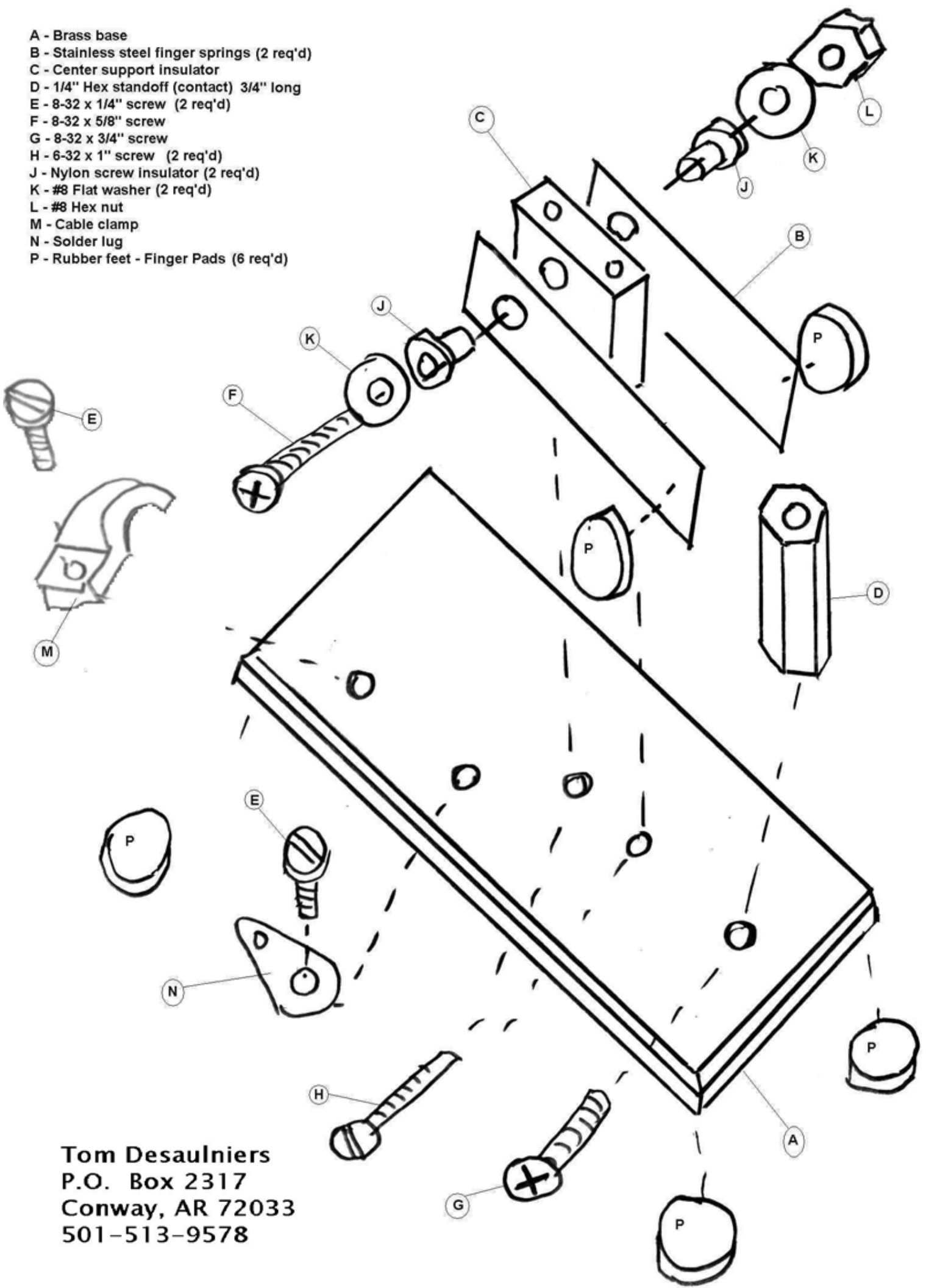


- A - Brass base
- B - Stainless steel finger springs (2 req'd)
- C - Center support insulator
- D - 1/4" Hex standoff (contact) 3/4" long
- E - 8-32 x 1/4" screw (2 req'd)
- F - 8-32 x 5/8" screw
- G - 8-32 x 3/4" screw
- H - 6-32 x 1" screw (2 req'd)
- J - Nylon screw insulator (2 req'd)
- K - #8 Flat washer (2 req'd)
- L - #8 Hex nut
- M - Cable clamp
- N - Solder lug
- P - Rubber feet - Finger Pads (6 req'd)



Tom Desaulniers  
P.O. Box 2317  
Conway, AR 72033  
501-513-9578